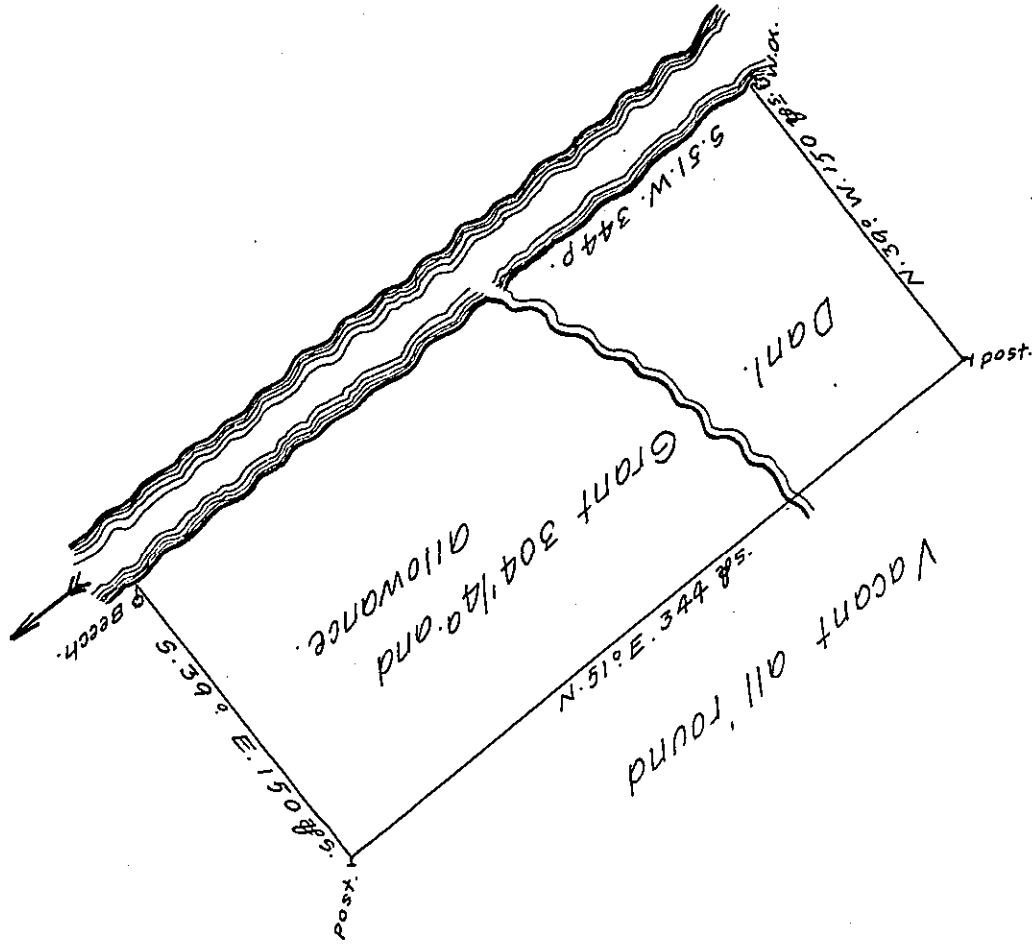


W



A Draught of a Tract of Land called Bonny-How. Situate on the south side of the North East Branch of Susquehanna^h-about a mile below Opolopy Creek in Northampton County containing three hundred and four Acres and one Quarter with the usual allowance of 6 ¹/₂ Cent. for Roads &c. Surveyed for Daniel Grant 7th September, 1769. In pursuance of an order N^o 1004 dated the third day of April, 1769.

To John Lukens, Esqr,
Survey^r General.

by Cha^s. Stewart, Dep. Surv.

IN TESTIMONY that the above is a copy of the original remaining on file in the Department of Internal Affairs of Pennsylvania, made conformably to an Act of Assembly approved the 16th day of February, 1833, I have hereunto set my Hand and caused the Seal of said Department to be affixed at Harrisburg, this twenty seventh day of February, 1911.

Henry Horck

Secretary of Internal Affairs.